

**THEODORE
ROOSEVELT**
PRESIDENTIAL LIBRARY

2024 ANNUAL REPORT



2024 ANNUAL REPORT



**THEODORE
ROOSEVELT**
PRESIDENTIAL LIBRARY

2024 ANNUAL REPORT

CONTENTS



A Letter from the CEO..... 04

*Thank You to Our
Incredible Staff & Board 06*

*Robbie Lauf Named
Executive Director..... 07*



CONSTRUCTION PROGRESS

Rising from the Earth..... 10

A Testament to Collaboration and Vision 26

Looking Ahead: Completing the Vision..... 30

*Marking Progress: The Ceremonial Beam Signing
at the Theodore Roosevelt Presidential Library 33*

Dedication of the Harold Hamm Campus..... 39

PROGRAMMING PROGRESS

*Restoring the Prairie: The Native Plants Project
Flourishes in 2024..... 42*

Looking Ahead: Building a Legacy of Restoration..... 48

*Launching Teach with TR: Bringing Roosevelt’s
Legacy to Classrooms Nationwide 50*

*An Evening with Arthur Brooks: Launching the
Theodore Roosevelt Presidential Library Speaker Series 55*

A First Look at the Theodore Roosevelt
Presidential Library Exhibits 58

Looking Ahead: The People’s Presidential Library 64

Partnerships and Community Outreach..... 66

2024 Highlights: Significant Additions to Our Collections ... 68

FINANCIAL PROGRESS

*2024 Financial Overview:
Progress and Sustainability 72*

Thank you..... 74

A LETTER FROM THE CEO



DEAR FRIENDS,

As we reflect on 2024, it is clear that this has been a year of extraordinary progress for the Theodore Roosevelt Presidential Library. Together, we are bringing to life a vision that honors Theodore Roosevelt’s enduring legacy and ensures his values continue to inspire future generations.

This year, we have made remarkable strides in the construction of the Library. From the completion of foundational infrastructure to the mass timber structure and roofing assembly, the Library is becoming a physical reality in the stunning landscape of the North Dakota Badlands. Sustainability remains central to our efforts, as we advance projects like the geothermic wells, the planned installation of photovoltaic canopies and the integration of a prairie roof. These features will ensure the Library embodies Roosevelt’s conservation ethos and serves as a model for environmentally conscious design.

Our outreach efforts have been equally impactful. The launch of Teach with TR has brought Roosevelt’s life and values into classrooms across the country, while our inaugural Speaker Series event with Arthur Brooks gathered over 730 attendees, demonstrating the power of Roosevelt’s message to resonate today. The Native Plants Project has further cemented our commitment to the environment, with tens of thousands of native plants taking root, ensuring the Library will be a living tribute to Roosevelt’s vision for conservation.

These accomplishments would not have been possible without your support. Your belief in this project has been our foundation, and your generosity continues to inspire us to think boldly and act with purpose. While we have made tremendous

progress, our journey is not yet complete. To bring this vision to full fruition, we continue to raise funds to ensure the Library is built and remains on solid financial footing for generations to come.

As Roosevelt famously said, “It is not the critic who counts... the credit belongs to the man who is actually in the arena.” I encourage you to share this annual report with others who might join us “in the arena.” Together, we are building more than a Library—we are creating a legacy that embodies Roosevelt’s values of courage, leadership, and civic action.

Thank you for being part of this journey. Your support is helping us create a place where history comes alive, and where visitors will be inspired to carry forward Theodore Roosevelt’s enduring call to live with purpose and passion.

With gratitude and determination,



EDWARD F. O’KEEFE

Chief Executive Officer

Theodore Roosevelt Presidential Library

Thank you to our incredible STAFF & BOARD

EDWARD O'KEEFE
Chief Executive Officer

ROBERT LAUF
Executive Director

KAY MCCONAGHA
Chief Financial Officer

DANIEL MUUS
Chief Development Officer

KEN VEIN
Senior Advisor on
Infrastructure Engineering

MATTHEW BRINEY
Chief Marketing &
Communications Officer

CHRISTOPHER BAKER
Manager, Events

STEPHANIE BEWLEY
Senior Director of Finance

JAYSON BOWEN
Maintenance Technician

MARY BRANDT
Director, Human Resource

JENNIFER CARROLL
Manager, Sustainability

SCOTT DO
Manager, Cloud Platform

AMY DROWN
Executive Assistant

ANTHONY ERICKSON
Director,
Construction Services

ZOEY GILL
Manager, Finance

WILLIAM HOLLINGSWORTH
Senior Development Officer

KATHLEEN JORGENSON
Manager, Procurement

RACHEL LANE
Programming Associate

SIGRID LETCHER
Director, Develop-
ment Operations

AMY MCCANN
Manager, Group Experience

COURTLAND MILLER
Director, Partnerships

ADDISON OLSON
Project Coordinator

BONNIE SALVESON
Human Resources Generalist

SUSAN SARNA
Senior Curator of Collections

KRISTIE SKUNBERG
Stewardship Manager

CANDACE STOCK
Executive Chef

MARTHA WESLEY
Executive Assistant

JAYNA WIENS
Development Accountant

**CHARLES VON-
BUCHWALD-WRIGHT**
Director, Technology

BOARD OF ADVISORS

HILARY HAMM
Chair, Executive Committee

KERMIT "KIM" ROOSEVELT
Vice Chair, Executive Committee

VAUGHN WILLIAMS
Treasurer, Executive Committee
& Finance Chair

BETH MYERS
Secretary, Executive Committe
& Governance Chair

EILEEN SCHEEL
Executive Committee &
Construction Chair

SPENCER ZWICK
Executive Committee &
Development Chair

THEODORE ROOSEVELT V
Executive Committee,
Programming & Partnerships Chair

DAVID SAGGAU
Board Member

VICTORIA CHAMBERS
Board Member

CHEVY HUMPHREY
Board Member

DOUGLAS BRINKLEY
Board Member

ROBBIE LAUF NAMED EXECUTIVE DIRECTOR

of the Theodore Roosevelt Presidential Library



In September 2024, the Theodore Roosevelt Presidential Library appointed Robbie Lauf as its Executive Director, a role that will guide the Library's transition from construction to operation as it prepares to open in July 2026. Lauf has been with the Library since 2022 as Director of Programs and Partnerships and, prior to that was a member of the board of trustees for TRPL. Robbie has been instrumental in shaping key initiatives and forging relationships that support the Library's mission.

A North Dakota native, Lauf brings extensive experience in strategy, public policy, and organizational leadership. His background includes serving as a senior advisor to Governor Doug Burgum and working as an associate at McKinsey & Company. His ability to bridge public and private partnerships has made him a strong advocate for the Library's long-term success.

As Executive Director, Lauf is responsible for museum operations, programming, and partnerships that will connect the Library with local communities, businesses, and educational institutions. He will play a key role in ensuring that the Library fulfills its mission of inspiring leadership, conservation, and civic engagement.



**CONSTRUCTION
PROGRESS IN 2024**



RISING FROM THE EARTH

In 2024, the Theodore Roosevelt Presidential Library reached remarkable milestones in its construction journey, transforming the vision of this world-class cultural institution into a tangible reality. From the foundational infrastructure to the intricate detailing of sustainable and architectural features, the project advanced with precision and purpose. Here's a detailed narrative of the year's achievements, reflecting the dedication of the teams, stakeholders, and supporters behind this transformative effort.

“There is a delight in the hardy life of the open. There are no words that can tell the hidden spirit of the wilderness that can reveal its mystery, its melancholy and its charm. The nation behaves well if it treats the natural resources as assets which it must turn over to the next generation increased and not impaired in value. Conservation means development as much as it does protection.”

—THEODORE ROOSEVELT



ABOVE:

In 2024, crews created the backbone of the Theodore Roosevelt Presidential Library's main structure, constructing footings, concrete walls, and foundational elements.



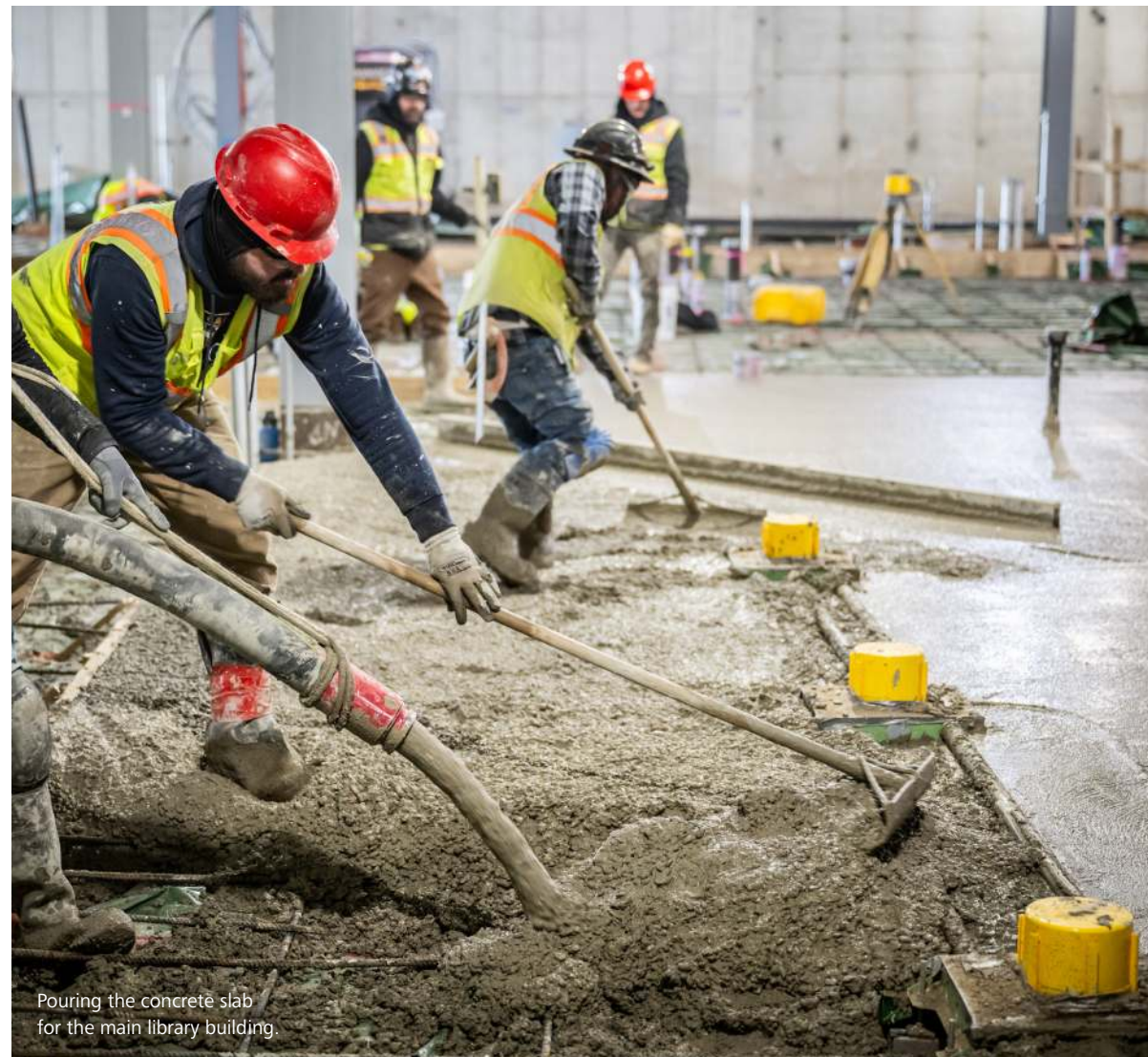
A BIRD'S EYE VIEW
An aerial view of the Theodore Roosevelt Presidential Library site in Medora, North Dakota, just before construction.

January–March

FOUNDATIONS OF PROGRESS

The year began with a focus on strengthening the essential foundations of the Library, building on work that carried over from 2023. Crews worked tirelessly on footings, structural concrete walls, and foundational elements, creating the backbone of the structure that will stand as a beacon of inspiration in the Badlands.

A key milestone was the **Billings County approval of the Chateau Road Project on February 6**. This critical development ensures seamless access to the Library, improving connectivity for future visitors while preserving the beauty of the surrounding landscape. With this approval, the project demonstrated its alignment with the region's infrastructure needs and its commitment to thoughtful integration into the local environment.



Pouring the concrete slab for the main library building.



A construction crew member surveys the campus site.

April–June

SUSTAINABILITY AND GROWTH TAKE CENTER STAGE

Spring brought new energy and progress to the project, with sustainability emerging as a core theme. On May 2, the Library's Board approved the installation of **onsite photovoltaic (PV) canopies**, reinforcing the commitment to renewable energy. These solar canopies will play a pivotal role in meeting the Library's energy needs while reducing its carbon footprint.

The project's green credentials were further highlighted on May 8, when the Library was presented at the **Living Future 2024 Sustainability Conference**. As a model for sustainable cultural projects, the Library demonstrated its commitment to innovation and environmental stewardship.

In June, the **Native Plant Project** reached a significant milestone, with over 60,000 plugs delivered and planted at North Dakota State University's Hettinger Research Extension Center. These native plants will eventually cover the Library's prairie roof, creating a living landscape that reflects Theodore Roosevelt's conservation legacy while supporting biodiversity and ecological health.



ABOVE:
A project team member collects seeds for the Native Plant Project.

July–September STRUCTURAL MILESTONES AND PRACTICAL PROGRESS

As summer unfolded, the Library’s physical structure began to rise, reflecting the culmination of years of planning and preparation. Key achievements during this quarter included:

COMPLETION OF THE SITE RETAINING WALL (JULY 31)

This critical infrastructure stabilizes the site while harmonizing with the natural contours of the Badlands.

RAMMED EARTH WALLS (SEPTEMBER 13)

Made with local materials, these walls are a striking example of sustainable design, emphasizing the Library’s connection to its environment and mirroring the landscape of the Badlands.

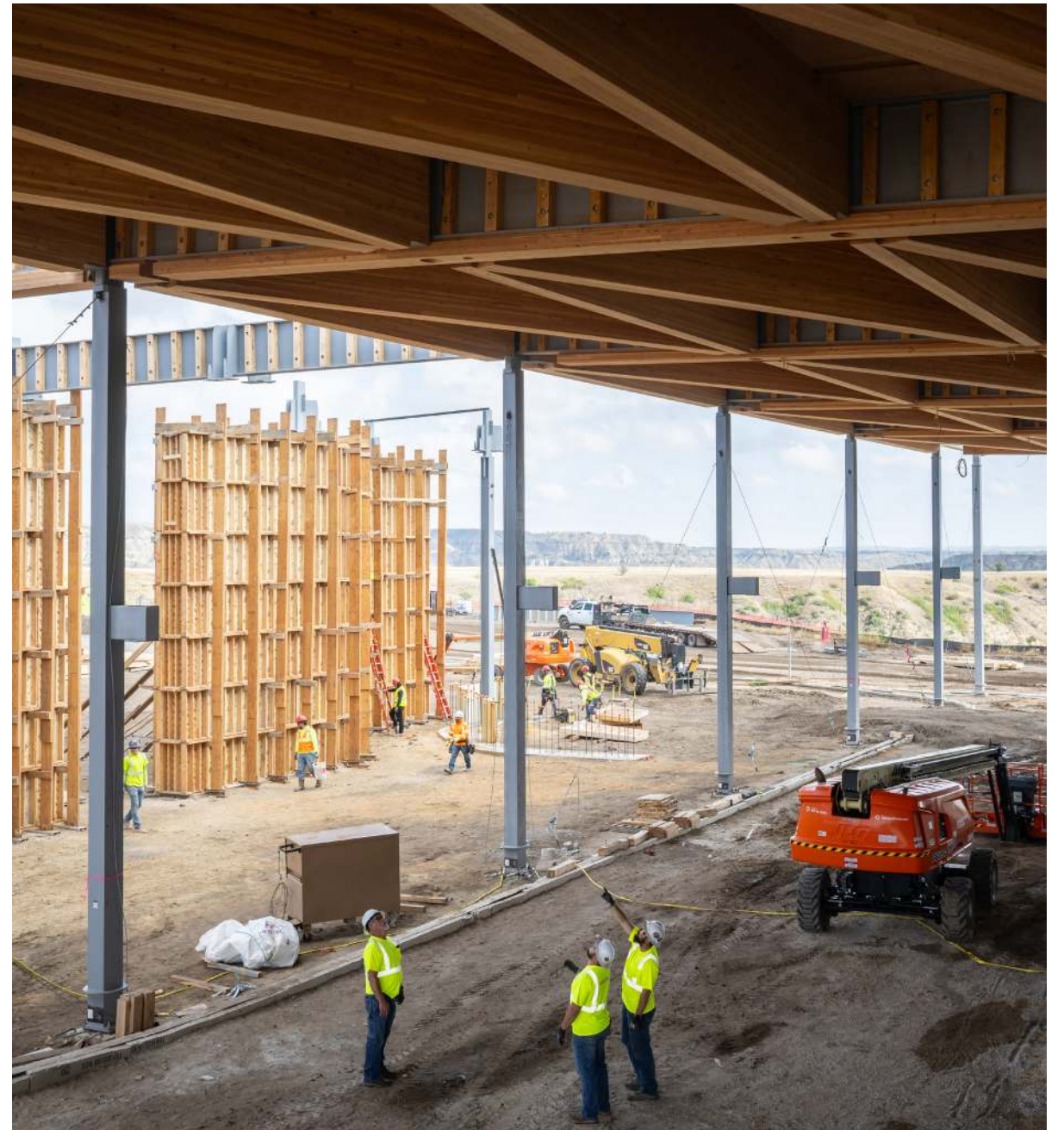
WATER INFRASTRUCTURE (SEPTEMBER 20)

Potable and non-potable water tanks were installed, ensuring the Library’s long-term operational needs are met.

Infrastructure work advanced steadily, with **underground plumbing and electrical systems** reaching **85% completion** by late July.

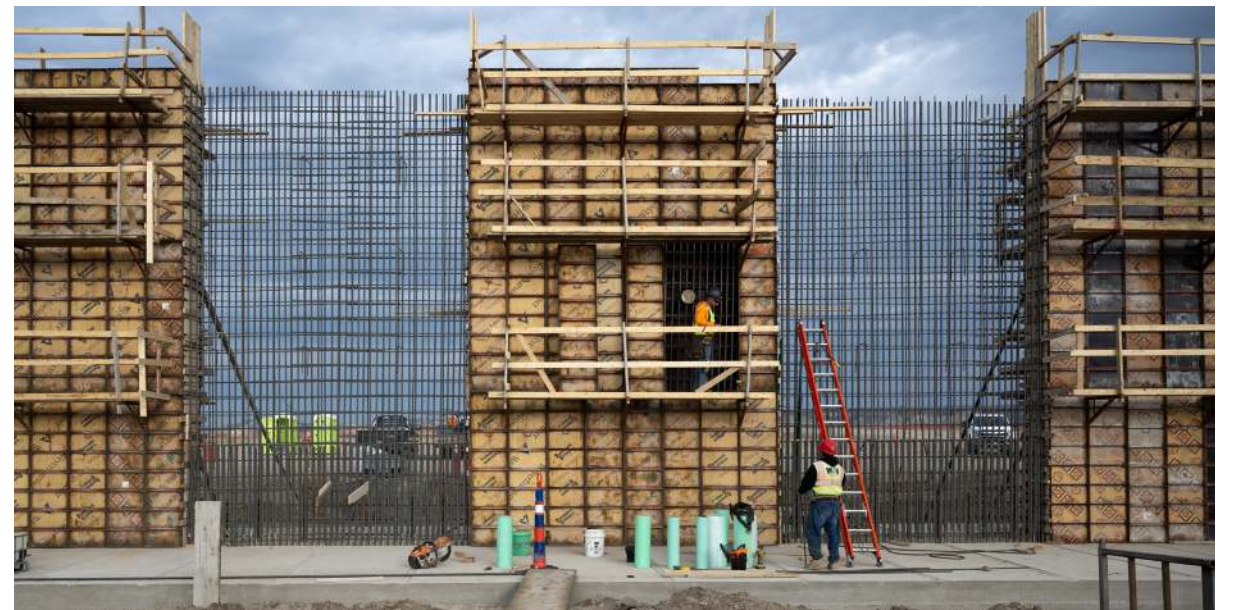


Roofing assembly began on September 4 and quickly progressed, reaching **90% completion** by the end of the quarter, a testament to the team’s efficiency and skill.



BUILDING FOR SUSTAINABILITY: Years of planning and preparation led to new sustainable construction achievements including sustainable compressed wood beams to replace steel when possible.

A view of the concrete forms for the Library's retaining wall at sunset.



ABOVE:
The Library's sustainable rammed Earth walls mirror the landscape of the Badlands.

MIDDLE AND BELOW:
Preparing to hang mass timber beams in the Library's permanent gallery space.



October–December A VISION TAKES SHAPE

The final months of the year marked a period of significant transformation as the Library began to resemble the architectural vision. The mass timber structure, completed on October 9, added a visually stunning and environmentally friendly element to the building. Known for its sustainability and aesthetic appeal, this timber framework highlights the Library’s innovative approach to design. Other milestones included:

CONCRETE ROOF POURS (OCTOBER 18)

Solidifying the roof structure and enabling the next phases of construction.

STRUCTURAL STEEL COMPLETION (OCTOBER 23)

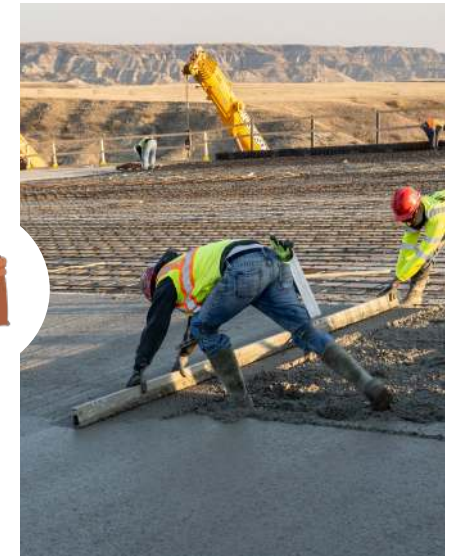
Finalizing the building’s skeleton and paving the way for exterior work.

MEDORA FOUNDATION PARKING LOT ADDITION (OCTOBER 31)

Enhancing visitor access with thoughtful site improvements.

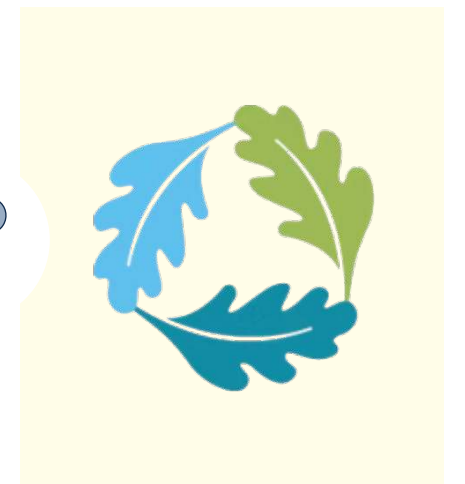


As exterior framing and sheathing began on October 7, the landscaping team also started placing dirt and other materials for the **prairie roof**, which reached **20% completion** by year’s end.



This living roof will be a defining feature of the Library, integrating the building into the landscape and showcasing Roosevelt’s enduring legacy as the “conservation president.”

The project’s commitment to sustainability was further emphasized at the **Greenbuild 2024 Sustainability Conference** in November, where the Library’s innovative design was presented to an international audience.



Construction of the Library made considerable progress during 2024.



A TESTAMENT TO COLLABORATION AND VISION

The progress achieved in 2024 reflects the hard work and dedication of the design and construction teams, including JE Dunn, JLG Architects, Snøhetta, and Confluence. Their expertise and commitment to excellence have ensured that every element of the Library aligns with its mission to inspire action, foster learning, and honor Theodore Roosevelt’s legacy.

This year also demonstrated the power of collaboration, as local leaders, benefactors, and community members worked together to bring this ambitious project to life. The integration of sustainable practices, innovative design, and respect for the surrounding environment ensures the Library will stand as a symbol of Roosevelt’s values for generations to come.



WORKING TOGETHER
Design and construction teams collaborated to integrate sustainable practices, innovative design, and respect for the surrounding environment as they build the new Library campus.

Representatives from JE Dunn, JLG Architects, Snøhetta, and Confluence pose for a photo at the Library construction site.



Looking Ahead:

COMPLETING THE VISION

As we enter 2025, the focus will shift to completing the prairie roof, interior finishes, and exhibit installations. Each phase of construction brings us closer to creating a space that is as inspiring and innovative as Theodore Roosevelt himself.

The Theodore Roosevelt Presidential Library is more than a building—it is a testament to the enduring power of vision, action, and collaboration. With every milestone reached, we are one step closer to welcoming visitors to a space where history, sustainability, and personal growth converge in meaningful and lasting ways.

Thank you to everyone who has supported this project. Together, we are building something extraordinary, and we can't wait to share it with the world.



Marking Progress:

THE CEREMONIAL BEAM SIGNING AT THE THEODORE ROOSEVELT PRESIDENTIAL LIBRARY

On August 14, 2024, over 400 supporters gathered at the construction site of the Theodore Roosevelt Presidential Library in Medora, North Dakota, for a ceremonial beam signing. This event symbolized the collaborative effort and progress of the Library project, which is set to open on July 4, 2026, in celebration of America's 250th birthday.

The highlight of the day was the signing of a memorial beam, which will permanently reside above the Man in the Arena gallery—a central exhibit that honors Theodore Roosevelt's iconic speech. Delivered in 1910 at the Sorbonne in Paris, Roosevelt's "Man in the Arena" speech is a timeless call to action, urging individuals to embrace courage, leadership, and resilience:

"It is not the critic who counts; not the man who points out how the strong man stumbles, or where the doer of deeds could have done them better. The credit belongs to the man who is actually in the arena..."

This powerful message forms the foundation of the Library's mission to inspire visitors to dare greatly and actively engage in their communities.



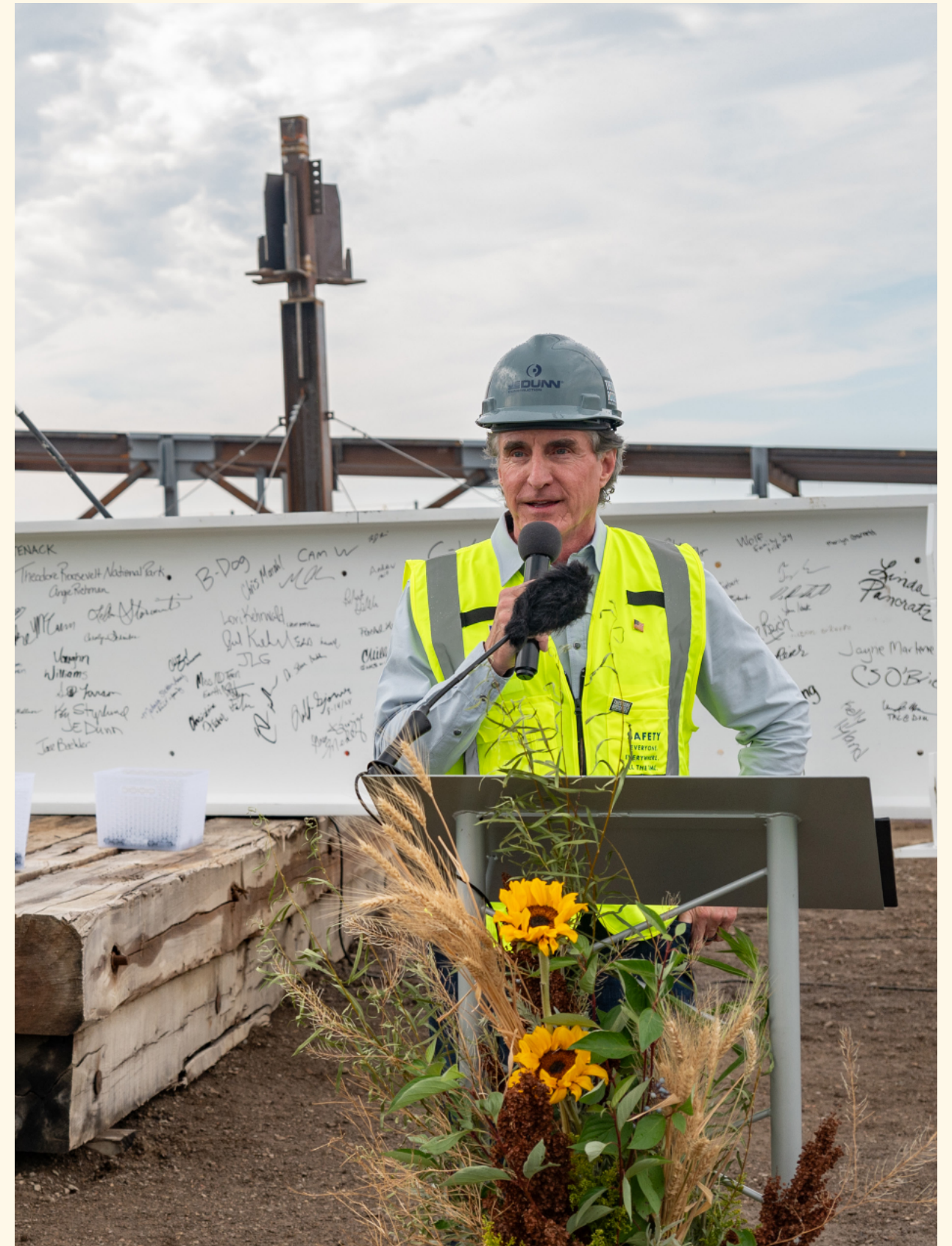
CEREMONIAL BEAM
Benefactors and key stakeholders participate in the ceremonial beam signing ceremony.

A CELEBRATION OF COLLABORATION AND PROGRESS

Governor Doug Burgum, a vocal champion of the Library project, joined the event, expressing gratitude to the state legislature, private benefactors, and all who have supported this visionary institution. In his remarks, he stated, “We’re not just building a building. We’re building an institution framed around citizenship, leadership, and conservation—the three pillars of Theodore Roosevelt’s legacy.”

Other notable attendees included Senators John Hoeven and Kevin Cramer, who have been instrumental in advancing federal support for the Library. The beam signing also drew construction workers, local officials, and supporters from across the state, all of whom added their signatures to the beam, making a lasting mark on this historic project.

Ed O’Keefe, CEO of the Theodore Roosevelt Presidential Library Foundation, praised the collective effort behind the project: “Today’s event is a testament to what we can achieve together. As I look out, it’s amazing to see all the people responsible for this incredible progress. I think Theodore Roosevelt would have really enjoyed today.”



ABOVE: North Dakota Governor Doug Burgum speaks at the ceremonial beam signing ceremony.



DEDICATION OF THE HAROLD HAMM CAMPUS

On December 17, 2024, the Theodore Roosevelt Presidential Library celebrated a momentous milestone with the dedication of the Harold Hamm Campus. This ceremony honored Harold Hamm, Chair of the Board of Trustees, whose transformative \$50 million gift helped make the Library a reality.

The Harold Hamm Campus encompasses the Theodore Roosevelt Presidential Library, its surrounding grounds, and parking areas, reflecting Hamm's legacy of bold investment in lasting endeavors. The dedication ceremony featured a symbolic branding event, where Harold Hamm and his daughter, Hillary Hamm, were presented with a custom registered cattle brand. Together, they branded one of the wood beams along the Library's roof, marking their enduring impact on this institution.

Harold Hamm's unparalleled generosity exemplifies the values of leadership, citizenship, and conservation that are at the heart of Theodore Roosevelt's legacy. His \$50 million investment not only advanced the Library's construction but also serves as a testament to his vision for inspiring future generations through this world-class cultural institution.

We are deeply grateful to Harold Hamm and his family for their unwavering support, which ensures that the Theodore Roosevelt Presidential Library will continue to inspire visitors from around the globe for generations to come.

BRAND NEW DAY

Hilary Hamm, Chair of the TRPL Executive Committee, and her father, Harold Hamm, founder and chair of Continental Resources, celebrate the Library's dedication of the Harold Hamm Campus in 2024.



PROGRAMMING PROGRESS IN 2024



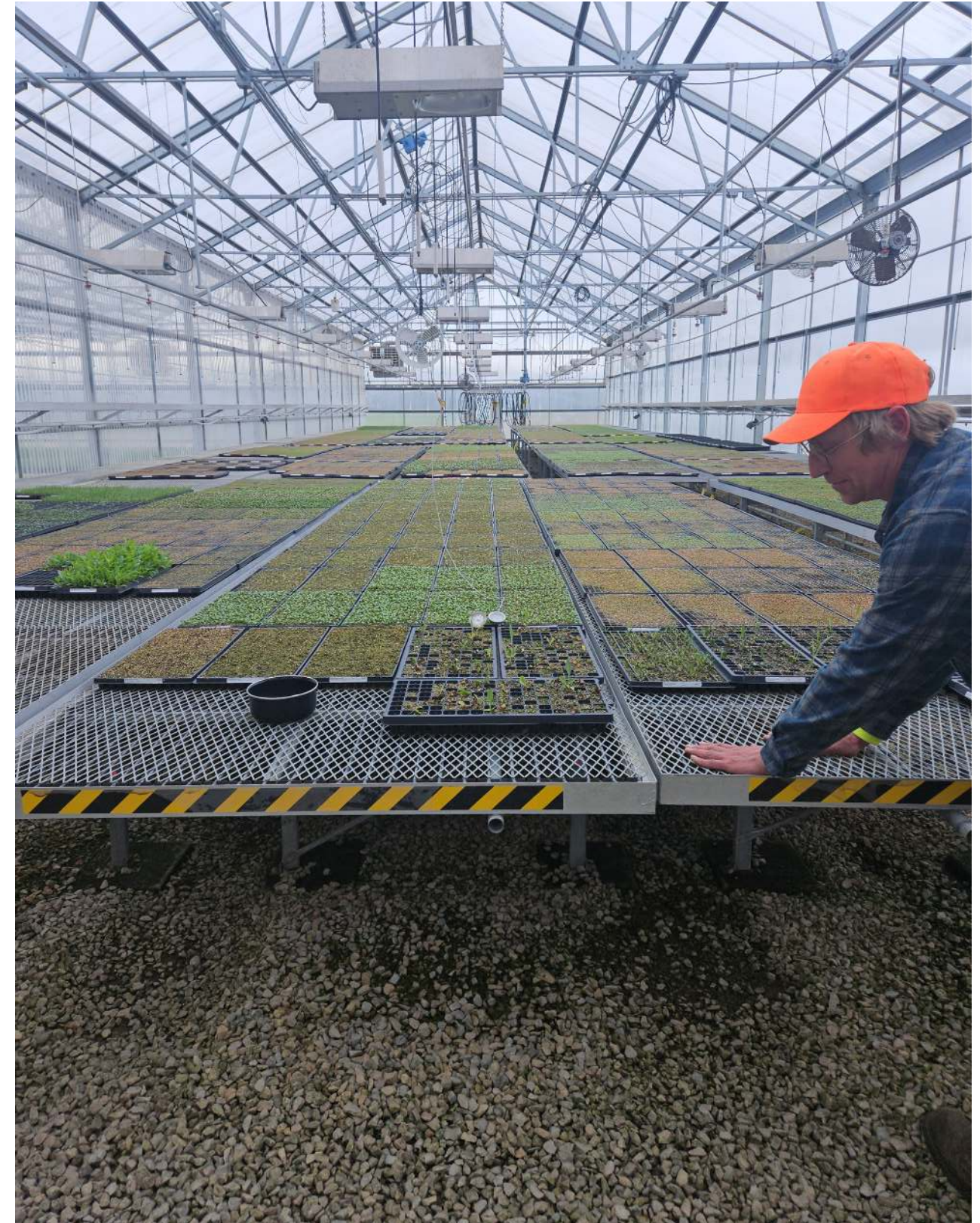
“It is true of the Nation, as of the individual, that the greatest doer must also be a great dreamer.”

—THEODORE ROOSEVELT

Restoring the Prairie: THE NATIVE PLANTS PROJECT FLOURISHES IN 2024

The Theodore Roosevelt Presidential Library's Native Plants Project continues to thrive in 2024, marking significant progress in restoring and enhancing the ecological diversity of the Library's grounds. This groundbreaking initiative aligns closely with Theodore Roosevelt's legacy as the "conservation president," emphasizing the importance of preserving biodiversity and fostering environmental stewardship.

This year, the project saw the planting of over 30 species of native grasses and forbs at the Hettinger Research Extension Center (HREC), part of North Dakota State University (NDSU). Led by Dr. Ben Geaumont, range and wildlife scientist at HREC, the team nurtured more than 60,000 seedlings, many of which are already producing seeds for future use. These efforts directly support the Library's ambitious goal of creating a living native prairie roof and sustaining ongoing restoration projects throughout the Library's landscape.



As part of TRPL's Native Plants Project, dozens of species of native grasses and forbes were cultivated at the Hettinger Research Extension Center at North Dakota State University (opposite) and RES's greenhouse in Wisconsin (above).

COLLABORATIVE EFFORTS YIELD IMPACTFUL RESULTS

Seed collection remains a cornerstone of the Native Plants Project. In partnership with Resources Environmental Solutions (RES), the team collects seeds from within a 50-mile radius of the Library, ensuring the use of local ecotypes that are better suited to the region’s environment. Over 200 native species have been collected, and 65 species were identified as particularly suitable for propagation into plugs—young plants that are more robust and easier to transplant.

The importance of this locally sourced approach cannot be overstated. Commercially available seeds often lack the genetic diversity and adaptability needed for specific restoration sites. By focusing on local genetic material, the project ensures that the restored prairie ecosystem will thrive, supporting pollinators, wildlife, and soil health.



ABOVE: The Native Plants Project team collected seeds from more than 200 native plant species within a 50-mile radius of the Library campus.

60,000 plugs delivered and planted at North Dakota State University’s Hettinger Research Extension Center.



Over **200 native species** collected, with **65 species** identified as suitable for plug propagation.



Seeds collected within a **50-mile radius** of the Theodore Roosevelt Presidential Library site.



ABOVE: Members of the Native Plants Project team process native seeds for planting.



ABOVE:
Once the Theodore Roosevelt Presidential Library is completed, it will naturally flow into the native landscape

BRINGING ROOSEVELT'S CONSERVATION VISION TO LIFE

This year's efforts are not only contributing to the Library's sustainability goals but also creating a broader model for ecological restoration. The seeds grown at HREC will produce several hundred thousand seedlings for the prairie roof, which will begin construction in 2025. This innovative living roof exemplifies the Library's commitment to the Living Building Challenge, emphasizing regenerative design that restores the environment while enriching the visitor experience.

Dr. Geaumont highlighted the dual impact of the project:

“While the project will be seen by many tourists at the Theodore Roosevelt Presidential Library and help push the message of grassland conservation, it is the potential impact on North Dakota’s agriculture and landscape on a larger scale that excites me.”

Looking Ahead:

BUILDING A LEGACY OF RESTORATION

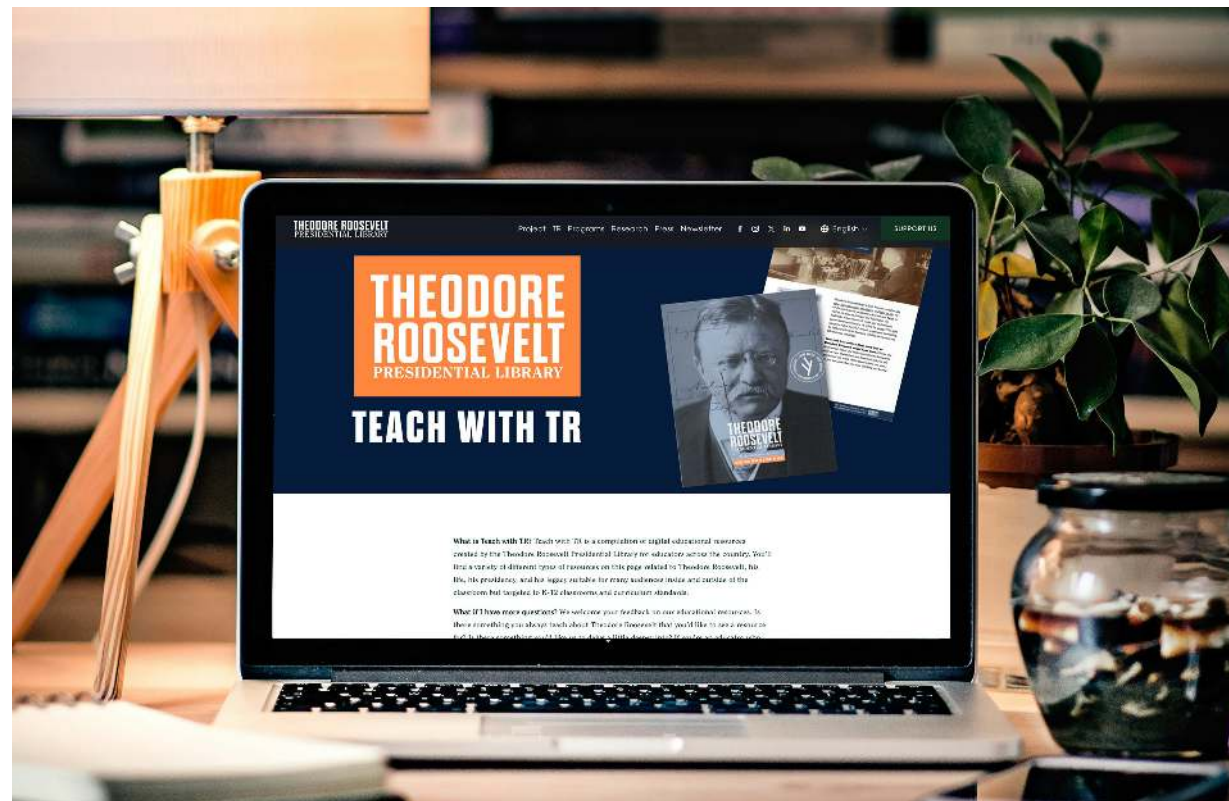
The Native Plants Project is more than a restoration effort—it is a living legacy of Theodore Roosevelt’s commitment to conservation and his love for the prairie. By combining research, innovation, and community engagement, the project is building a sustainable future for North Dakota’s landscapes and beyond. Visitors to the Theodore Roosevelt Presidential Library will experience firsthand the power of ecological renewal, inspired by Roosevelt’s enduring call to protect and preserve the natural world for generations to come.

For more information, visit trlibrary.com/project/native-plants.



Launching Teach with TR: BRINGING ROOSEVELT'S LEGACY TO CLASSROOMS NATIONWIDE

In 2024, the Theodore Roosevelt Presidential Library proudly launched Teach with TR, our first-ever comprehensive suite of digital educational resources. Designed to make Theodore Roosevelt's life, presidency, and enduring legacy accessible to K-12 classrooms and homeschooling families across the country, these materials are carefully aligned with North Dakota State Standards and National C3 Standards to ensure they meet the highest educational benchmarks.



WHY TEACH WITH TR?

Teach with TR is a dynamic collection of resources created for educators, parents, and students alike, offering engaging ways to explore Theodore Roosevelt's leadership, conservation efforts, and historical significance.

These resources include:

<p>Lesson Plans</p>	<p>Interactive, Inquiry Design Model (IDM) lesson plans covering topics such as presidential leadership, the rise of conservation, and Roosevelt's role in shaping the modern presidency. These plans encourage critical thinking and are tailored to meet diverse learning needs.</p>
<p>Hands-On History Activities</p>	<p>Creative and experiential projects, such as recreating Roosevelt's famous frying pan bread or designing cattle brands inspired by his ranching days in the Badlands. These activities encourage students to step into Roosevelt's world and connect with history in tangible ways.</p>
<p>Resource Packets</p>	<p>Curated collections of primary sources, including documents, speeches, and artifacts related to key themes such as the Panama Canal and women's suffrage. These packets provide students with authentic materials to analyze and explore.</p>
<p>National History Day Guides</p>	<p>Tailored support for students participating in National History Day, offering research strategies, topic inspiration, and tools to delve deeper into Roosevelt's era and legacy.</p>
<p>Timelines</p>	<p>Explore detailed timelines, including "Theodore Roosevelt's Life," "His Presidency," and "Life in the Badlands," providing educators with accessible overviews of key moments in Roosevelt's journey.</p>

20 Teach with TR resources available on the TRPL website for K-12 Classrooms



620 students / classrooms participated in the Presidential Primary Sources Project



THEODORE ROOSEVELT PRESIDENTIAL LIBRARY Project TR Programs Research Press Newsletter English SUPPORT US

WHAT DID IT MEAN TO BE A PROGRESSIVE AT THE TURN OF THE 20TH CENTURY?

The this Inquiry Design Model (IDM) lesson plan with four supporting questions to discuss progressivism at the turn of the 20th century.

North Dakota State Standards:
Social Studies
§ 8th-12th grade: US.6, 12.1, US.8, 12.4, US.8, 12.5, US.8, 12.1, 6.3.2

National CS Standards:
§ 9th-12th grade: D2.His.1.6-8, D2.His.2.6-8, D2.His.3.6-8, D2.His.6.6-8, D2.His.10.6-8, D2.His.14.6-8, D2.His.15.6-8

§ 9th-12th grade: D2.His.1.9-12, D2.His.2.9-12, D2.His.3.9-12, D2.His.6.9-12, D2.His.10.9-12, D2.His.14.9-12, D2.His.15.9-12

[Download PDF](#)

DID THEODORE ROOSEVELT FUNDAMENTALLY CHANGE THE PRESIDENCY AND ITS RELATIONSHIP TO EXECUTIVE POWER?

Use this Inquiry Design Model (IDM) lesson plan with four supporting questions to consider executive power during Theodore Roosevelt's presidency and its use today in presidential administrations.

North Dakota State Standards:
Social Studies
§ 6th-12th grade: US.6, 12.1, US.6, 12.4, US.6, 12.5, US.6, 12.1, 6.3.2

National CS Standards:
§ 6th-8th grade: D2.His.1.6-8, D2.His.2.6-8, D2.His.3.6-8, D2.His.6.6-8, D2.His.10.6-8, D2.His.14.6-8, D2.His.15.6-8

§ 9th-12th grade: D2.His.1.9-12, D2.His.2.9-12, D2.His.3.9-12, D2.His.6.9-12, D2.His.10.9-12, D2.His.14.9-12, D2.His.15.9-12

[Download PDF](#)

WAS THEODORE ROOSEVELT A FEMINIST?

The this Inquiry Design Model (IDM) lesson plan with four supporting questions to discuss Theodore Roosevelt and feminism in the classroom.

North Dakota State Standards:
Social Studies
§ 8th-12th grade: US.6, 12.1-9.2.1, US.6, 12.1-9.2.2

Sociology:
§ 8th-12th grade: SOC.5, 12.1-2.02.4

National CS Standards:
§ 8th-9th grade: D2.His.1.6-8, D2.His.2.6-8, D2.His.3.6-8, D2.His.6.6-8, D2.His.10.6-8, D2.His.14.6-8, D2.His.15.6-8

§ 9th-12th grade: D2.His.1.9-12, D2.His.2.9-12, D2.His.3.9-12, D2.His.6.9-12, D2.His.10.9-12, D2.His.14.9-12, D2.His.15.9-12

[Download PDF](#)

Meeting Educators' Needs Nationwide

The materials in Teach with TR are designed to support educators in making history engaging and relevant. Classroom teachers can seamlessly incorporate these resources into their lesson plans, while homeschooling families gain access to an extensive library of curated materials to enrich their curriculum. The alignment with educational standards ensures Teach with TR integrates easily into classrooms across the country, while also offering opportunities for independent and group learning.



Inspiring a National Audience

Teach with TR isn't just for educators—it's a resource for everyone who wants to share Roosevelt's remarkable legacy with the next generation. Parents, community leaders, and history enthusiasts are encouraged to share these materials with their local schools, libraries, and educational networks. By doing so, they can help inspire young learners to embrace the values Roosevelt championed: leadership, conservation, and civic-mindedness.



Explore and Share Teach with TR

We invite you to visit trlibrary.com/teach-tr to explore this groundbreaking initiative. From downloadable lesson plans to interactive activities, Teach with TR is a one-stop hub for educational content rooted in Theodore Roosevelt's timeless values.

Help us spread the word! Share Teach with TR with educators and families in your community, and let's work together to ignite a passion for history, leadership, and action in classrooms across the country.



By creating Teach with TR, the Theodore Roosevelt Presidential Library continues to honor its mission to inspire action and cultivate a deeper understanding of Roosevelt's legacy, one classroom at a time.



An Evening with Arthur Brooks: **LAUNCHING THE THEODORE ROOSEVELT PRESIDENTIAL LIBRARY SPEAKER SERIES**

On October 2, 2024, over 730 attendees packed the historic Fargo Theatre for the inaugural event of the Theodore Roosevelt Presidential Library Speaker Series: An Evening with Arthur Brooks. Hosted in partnership with the Dakota Medical Foundation, the evening marked the beginning of what promises to be a transformative program for the Library and the region.

Arthur C. Brooks, a Harvard professor and global expert on happiness and leadership, captivated the audience with a masterclass on living a fulfilling and meaningful life. Drawing on the principles of faith, family, friendship, and service-driven work, Brooks explored timeless strategies for building happiness amidst life's inevitable challenges. His message resonated deeply with Theodore Roosevelt's own philosophy of resilience, action, and engagement with life's struggles.

"Far and away, the best prize in life is to work hard at work worth doing," Roosevelt famously said. Arthur Brooks echoed this sentiment, emphasizing that true happiness comes not from avoiding hardship but from embracing life fully—its highs and its lows. Drawing parallels to Roosevelt's transformative time in the North Dakota Badlands, Brooks noted that Roosevelt found healing and purpose amidst profound personal loss, bolstered by the beauty of the landscape and the warmth of the local community.



CONNECTING PAST AND PRESENT

The Speaker Series embodies the Theodore Roosevelt Presidential Library's mission to inspire leadership, promote conservation, and foster civic engagement.

As Ed O'Keefe, CEO of the Library, stated during the event:

“This is the first, but far from the last of the Theodore Roosevelt Presidential Library Speaker Series. We are bringing incredible speakers like Arthur to North Dakota to share lessons with North Dakotans and with the world.”

Brooks's reflections on Roosevelt's time in the Badlands provided powerful insights. “A happy life is one where you're fully alive,” Brooks remarked. He praised Roosevelt's ability to find meaning and growth even in the face of grief, noting that Roosevelt's philosophy of being “in the arena” is a lesson for all of us to embrace life's struggles as opportunities to thrive.

A VISION FOR THE FUTURE

The Theodore Roosevelt Presidential Library Speaker Series will continue in 2025 with four inspiring events featuring distinguished speakers who, like Roosevelt, dare greatly and live boldly. Don't miss out—sign up for our email newsletter or follow us on social media to be the first to know when these events are announced.

For those who couldn't attend in person, a recap of *An Evening with Arthur Brooks* is available to watch on our YouTube channel. Relive the inaugural event and stay connected to this growing tradition of thought-provoking and inspiring discussions.



ABOVE: Members of the TRPL Board of Trustees, and supporters, come together for the Library's inaugural TRPL Speaker Series event, featuring Arthur Brooks.

A First Look at the THEODORE ROOSEVELT PRESIDENTIAL LIBRARY EXHIBITS

In 2024, the Theodore Roosevelt Presidential Library made tremendous progress in bringing its groundbreaking exhibits to life, offering an exciting glimpse into what visitors will experience when the Library opens on July 4, 2026. Designed in collaboration with renowned partners The Future of Storytelling, exhibit designers Local Projects, and exhibit fabricators Dimensional Innovations, these exhibits will go beyond showcasing history—they are designed to immerse visitors in the life and legacy of Theodore Roosevelt through dynamic storytelling, interactive adventures, and opportunities for reflection and action.

From his formative years in New York to his time as a rancher in the Badlands, from the halls of the White House to the jungles of the Amazon, the exhibits will take visitors on a journey through the defining moments of Roosevelt's life. At every step, visitors will be invited to explore the values that shaped him—courage, resilience, curiosity, and bold leadership—and connect them to their own lives.

THE VISITOR EXPERIENCE: WALKING THROUGH THE CHAPTERS OF ROOSEVELT'S LIFE

The Library's exhibits follow eight key chapters of Theodore Roosevelt's life, blending authentic artifacts, immersive experiences, and thought-provoking storytelling to create a journey that is as educational as it is engaging.



Chapter 1: Childhood

The experience begins with Roosevelt's early life in New York City. Visitors will step into young Roosevelt's parlor, explore his fascination with natural history, and reflect on how a sickly boy with asthma transformed himself into a vigorous, adventurous young man. Through artifacts and interactive displays, guests will gain a sense of Roosevelt's early curiosity and the resilience that propelled him forward.



Chapter 2: Young Adulthood

This chapter explores Roosevelt's coming-of-age moments, including his heartbreaking losses and his retreat to the Dakota Badlands. The **Memory Train** exhibit brings to life Roosevelt's devastating personal tragedies—the loss of his wife, Alice, and his mother on the same day—and shows how he found healing and purpose in the wide-open spaces of North Dakota. Visitors will engage with the challenges Roosevelt faced during this time, including his struggles to adapt to ranching life and the lessons he learned in the process.



Chapter 3: Becoming a Leader

The focus shifts to Roosevelt's rise to national prominence during the Spanish-American War. In the **Rough Riders** galleries, visitors will join Roosevelt in camp before the Battle of Kettle Hill, step into the chaos of battle, and reflect on the courage and sacrifice it required. This chapter is brought to life with hands-on activities and immersive storytelling that underscore the qualities of boldness and determination Roosevelt exhibited as he transitioned from a rancher to a national hero.



Chapter 4: Path to the Presidency

Roosevelt's entry into national politics is highlighted in this chapter. Exhibits such as the **Campaign Trail** and **Whistle Stop Tour** will allow visitors to design their own campaign posters, explore Roosevelt's vision for progressive policies, and reflect on his ability to connect with Americans from all walks of life. Interactive elements give visitors a taste of the energy and optimism that propelled Roosevelt into the national spotlight.



Chapter 5: The Presidency

The centerpiece of the exhibits, this chapter places visitors in the heart of Roosevelt's years as the 26th President of the United States. From walking through a replica of the White House to participating in the **Run Your Own Presidency** activity, guests will gain a deeper understanding of Roosevelt's approach to leadership. Key themes include his progressive policies, bold actions, and commitment to conservation, all of which continue to shape the nation today.



Chapter 6: After the White House

This chapter explores Roosevelt's post-presidential years, including his **African Expedition** and the **1912 Bull Moose Campaign**. Visitors will step into the "In the Arena" exhibit, where Roosevelt's famous speech at the Sorbonne is brought to life, inspiring guests to reflect on their own commitment to action and participation in civic life.



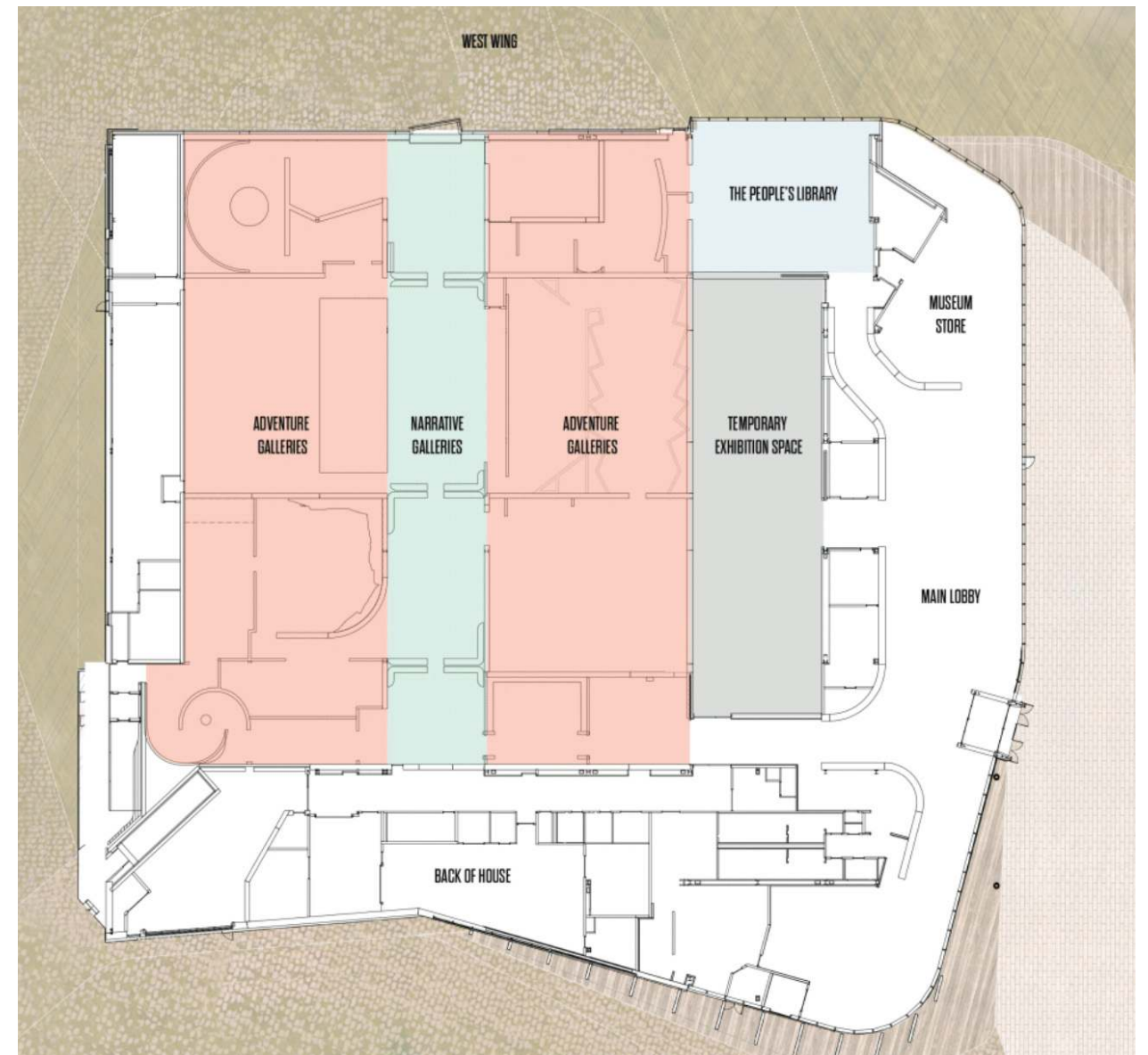
Chapter 7: The Last Adventure

Roosevelt's final years, including his daring exploration of the Amazon rainforest, are the focus of this chapter. The **Amazon Adventure** gallery allows visitors to experience the challenges of Roosevelt's expedition, from navigating the treacherous River of Doubt to facing illness and hardship. This chapter emphasizes Roosevelt's unyielding spirit and thirst for adventure, even in the face of great personal risk.



Chapter 8: The Final Chapter

The journey concludes with a look at Roosevelt's enduring legacy. The **People's Library** invites visitors to reflect on what they have learned, make personal commitments inspired by Roosevelt's values, and consider how they will leave their own mark on the world. This chapter ensures that every visitor departs with a deeper understanding of Roosevelt's life and a renewed sense of personal purpose.



BLENDING STORYTELLING, IMMERSION, AND INNOVATION

The exhibits have been meticulously designed by **Local Projects**, a leader in interactive storytelling, with fabrication by **Dimensional Innovations**, known for creating engaging and sustainable environments. Every gallery is brought to life with hands-on activities, layered storytelling, and authentic artifacts, ensuring a rich and meaningful experience.

The Adventure Galleries

immerse visitors in Roosevelt's world, allowing them to practice marksmanship like Roosevelt did in the Badlands, take on leadership roles in the heat of battle, or engage in conservation activities at Elkhorn Ranch.



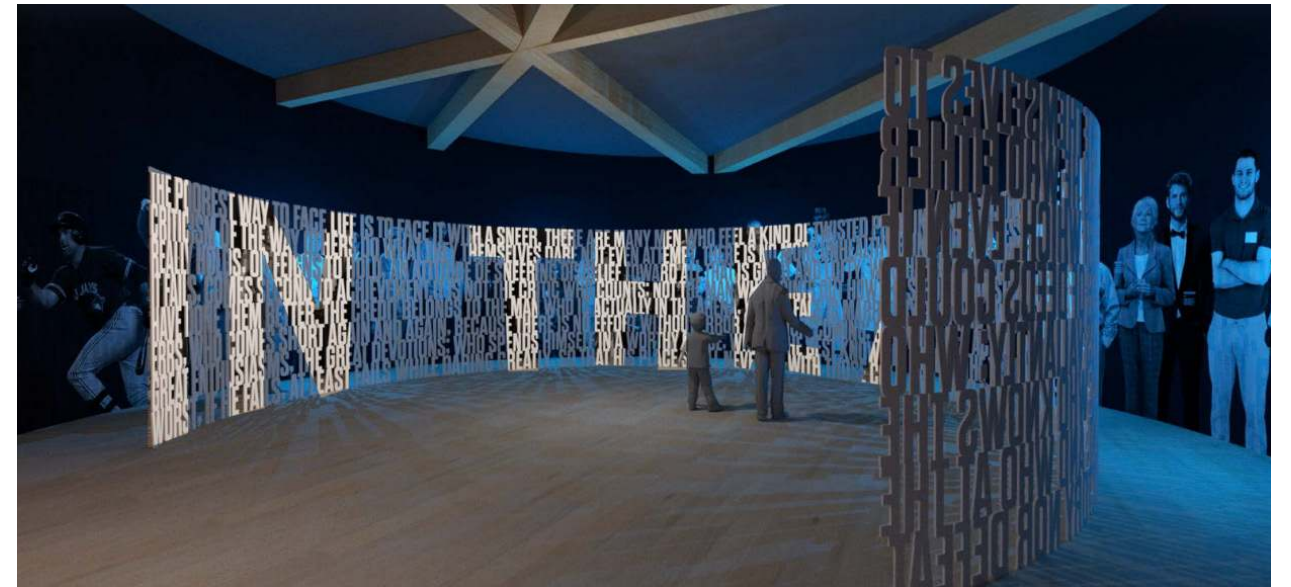
These physical, participatory experiences are complemented by the Narrative Galleries,

which provide the historical context and artifacts that help visitors connect Roosevelt's personal journey to the larger story of America.



The innovative Trailblazer System

enhances the entire experience, offering visitors a personalized journey that aligns with Roosevelt's core values: dare greatly, think boldly, care deeply, and live passionately. Guests will leave with digital mementos, badges, and a summary of their takeaways, ensuring that the inspiration sparked during their visit continues long after they leave Medora.



ABOVE: A first look at the Library's unique and interactive exhibit galleries.

Looking Ahead: THE PEOPLE'S PRESIDENTIAL LIBRARY

The exhibits at the Theodore Roosevelt Presidential Library promise to be a transformative experience, blending history, adventure, and personal reflection. With the guidance of partners like The Future of Storytelling, Local Projects, and Dimensional Innovations, the Library is creating an institution that will inspire visitors of all ages to embrace Roosevelt's legacy and carry his values into their own lives.

As we prepare for the Library's grand opening in 2026, we look forward to welcoming guests to Medora, North Dakota, where they will experience history like never before and leave empowered to make their own impact on the world.



PARTNERSHIPS AND COMMUNITY OUTREACH

In 2024, the Theodore Roosevelt Presidential Library focused fostering partnerships and engaging with the local community to support Medora's development and enhance the experience for visitors and residents alike. These efforts aimed to create practical solutions for shared challenges while honoring Theodore Roosevelt's commitment to collaboration and public service.

COLLABORATIVE PLANNING WITH LOCAL PARTNERS

TRPL worked with the Theodore Roosevelt Medora Foundation (TRMF), local government, and the National Park Service (NPS) on projects that align with Medora's growth and sustainability goals. From housing and transportation to trail development, these efforts address critical infrastructure needs to support both the community and the increasing number of visitors to the area.

STRENGTHENING COMMUNICATION AND PROBLEM-SOLVING

Throughout the year, TRPL hosted several gatherings with stakeholders, including national and regional NPS leaders and local partners, to facilitate open discussions and cooperative problem-solving. These meetings provided opportunities to share ideas, identify shared priorities, and ensure coordination on projects that benefit Medora and the surrounding region.

WORKFORCE HOUSING COLLABORATION

The availability of high-quality workforce housing is a pressing need in Medora. In 2024, TRPL worked with partners to advance planning for housing solutions informed by successful models from other communities. These efforts aim to create housing that supports seasonal workers and helps maintain a healthy, thriving community.

IMPROVING TRAIL CONNECTIVITY

Expanding and enhancing trail systems remained a focus in 2024, with discussions about connecting existing park trails to nearby areas and improving access to the Maah Daah Hey Trail. These efforts aim to improve outdoor recreation opportunities for visitors and strengthen the connection between Medora and the surrounding landscapes that Roosevelt loved.

COLLABORATIVE PROGRAMMING AND POLICY EFFORTS

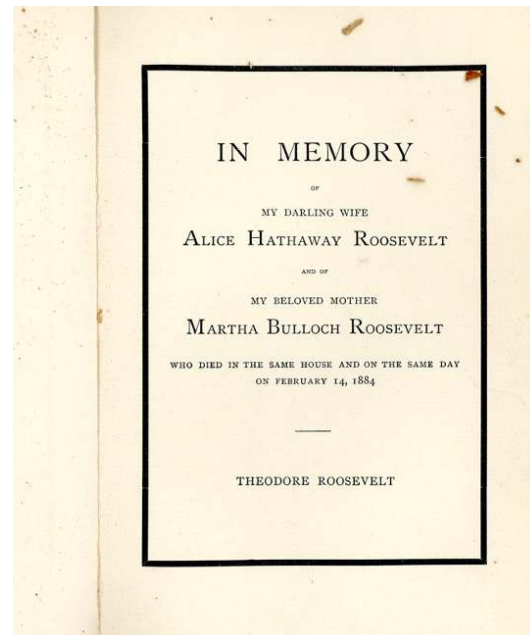
TRPL continued to explore joint programming opportunities with TRMF and NPS, such as youth education programs, outdoor activities, and exhibits that align with Roosevelt's values. Additionally, we supported discussions on implementing the EXPLORE Act, focusing on community development, improved park visitor data, and expanding recreational trails.



The TRPL has partnered with multiple local and state organizations to ensure progress aligns with Medora's growth and sustainability goals.

2024 Highlights: SIGNIFICANT ADDITIONS TO OUR COLLECTIONS

This year, the Theodore Roosevelt Presidential Library proudly expanded its collection with several extraordinary artifacts that embody Theodore Roosevelt's values and legacy. These additions not only enhance our understanding of Roosevelt's life and era but also provide visitors with tangible connections to the personal, political, and artistic dimensions of his story. Here are the treasures we welcomed in 2024:



A Heartfelt Tribute: "In Memory" Manuscript (1884)

One of the most poignant additions to our collection this year is a copy of the "In Memory" tribute written by Theodore Roosevelt following the tragic loss of his wife, Alice Hathaway Roosevelt, and his mother, Martha Bulloch Roosevelt, on the same day in 1884. This handwritten piece offers a glimpse into Roosevelt's profound grief and resilience, reflecting the deeply personal struggles that shaped his character. Measuring 8.5"x5" and in fragile condition, this document underscores the delicate balance between Roosevelt's public persona and private sorrows. Visitors will find it displayed in our narrative galleries, alongside insights into Roosevelt's transformative years in the Dakota Badlands.



The Saint-Gaudens High-Relief Coins (\$20, 1907, and \$10, 1908)

A testament to Roosevelt's ambition to elevate American aesthetics, these high-relief gold coins designed by Augustus Saint-Gaudens exemplify his commitment to beauty and excellence in all realms of life. The \$20 coin features Lady Liberty holding an olive branch and a torch, symbolizing progress and enlightenment, while the \$10 coin reinterprets Lady Liberty with a striking Native American headdress. Both coins, with their intricate artistry and historical resonance, highlight Roosevelt's collaboration with Saint-Gaudens to revolutionize U.S. coinage.



Springfield Model 1896 Krag Bolt-Action Rifle (1896)

This Springfield rifle, used by Roosevelt during his time as a Rough Rider, captures a pivotal chapter in his journey from New York reformer to national hero. Measuring 41.5 inches, with its original case extending to 50 inches, this rifle remains in good condition and serves as a symbol of Roosevelt's valor and leadership during the Spanish-American War. It will be prominently displayed in the "Becoming a Leader" gallery, immersing visitors in the grit and determination of Roosevelt's military career.



Theodore Roosevelt Bronze Plaque (1920)

Created by James Earle Fraser, this 13"x10" bronze plaque is a striking likeness of Roosevelt that captures his resolute and visionary spirit. Fraser, renowned for iconic works such as the Buffalo Nickel, perfectly encapsulated Roosevelt's dynamic character in this piece. Generously gifted by benefactor Rusch, the plaque will be showcased in the "Legacy" section, underscoring the lasting impact of Roosevelt's values on future generations.



FINANCIAL PROGRESS IN 2024



“Do what you can, with what
you have, where you are.”

—THEODORE ROOSEVELT

2024 Financial Overview

PROGRESS AND SUSTAINABILITY

The Theodore Roosevelt Presidential Library Foundation (TRPLF) has made significant financial progress towards overall construction:

\$286M

in private donations secured

\$50M

state endowment secured

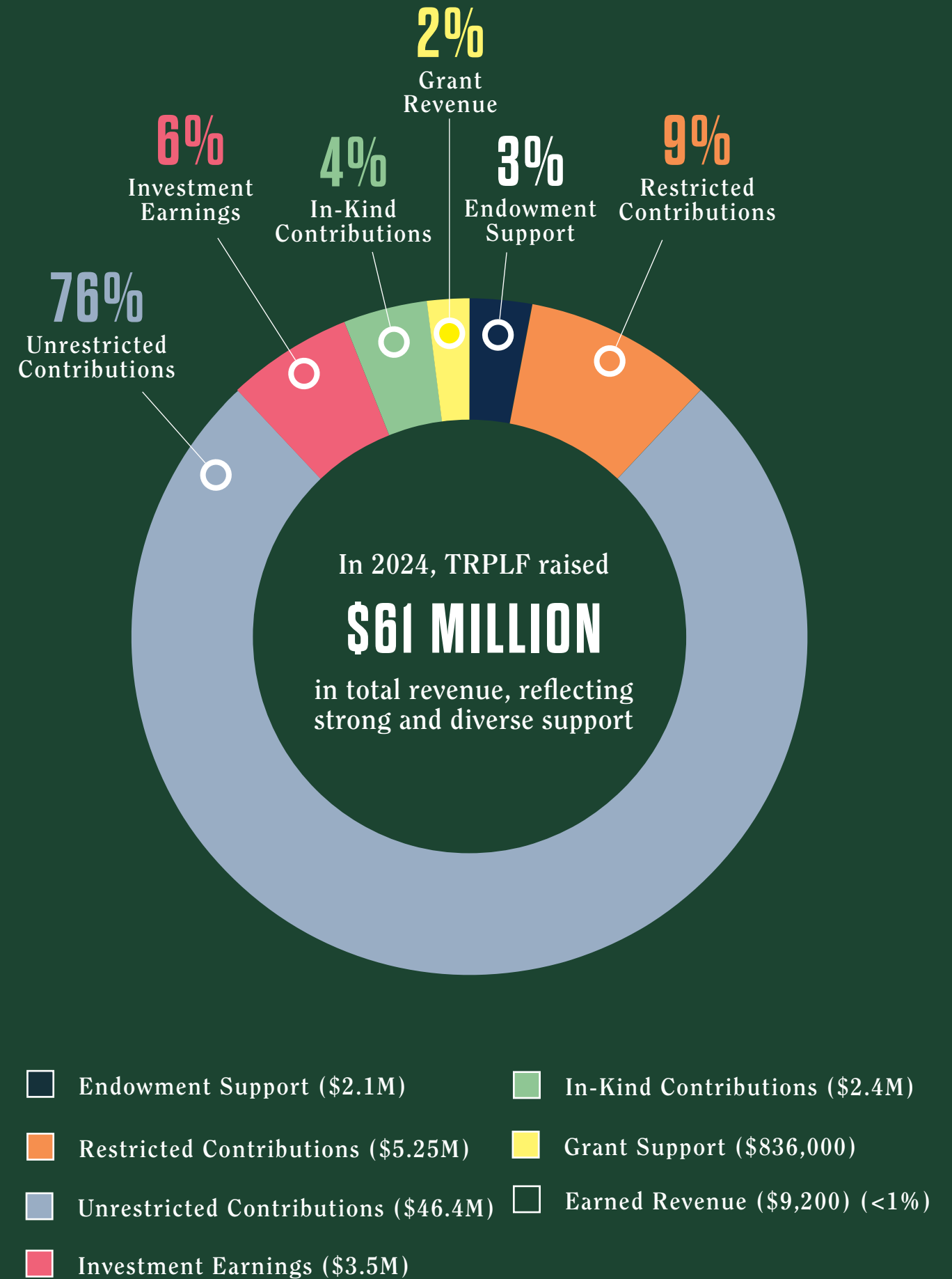
These funds contribute to the Library's **\$450 million total project budget**, covering construction, land acquisition, exhibit development, and archives digitization.

75%

of the necessary funds have been raised, with **\$114 million still needed** to fully realize the project






As construction advances, the Foundation continues to focus on fundraising to complete the project and establish long-term financial sustainability. **Supporters are encouraged to share this report and invite others to join “in the arena” to help bring Theodore Roosevelt’s legacy to life for future generations.**



Thank you for joining us “IN THE ARENA”

Stay informed by joining our email list at trlibrary.com/newsletter

-  TRPRESIDENTIALLIBRARY
-  TRPRESLIBRARY
-  @TRLIBRARY

Support us by visiting trlibrary.com/support-trpl

Will Hollingsworth
Senior Development Officer
Mobile: 303-916-9846
Email: will@trlibrary.com

“The credit belongs to the man who is actually in the arena, whose face is marred by dust and sweat and blood; who strives valiantly; who errs, who comes short again and again, because there is no effort without error and shortcoming...”

- THEODORE ROOSEVELT

PHOTO CREDITS

Chad Ziemendorf: pg. 1, 2, 8, 11-12, 14-15, 18-24, 26-27, 29, 44, 74; Dakota Medical Foundation: pg. 57; Local Projects: pg. 40, 59, 60-64; Poppy Mills: pg. 32, 34, 36-37; Snøhetta: Cover, pg. 4, 30, 46, 48, 64, 70; Unsplash/Brooke Cagle: pg. 53 (bottom); Unsplash/Mario Heller: pg. 52 (bottom); Unsplash/Kelly Sikkema: pg. 52 (top)

**THEODORE
ROOSEVELT**
PRESIDENTIAL LIBRARY

**THEODORE
ROOSEVELT**
PRESIDENTIAL LIBRARY